

# 2017 LENRD Nitrate Sampling Results

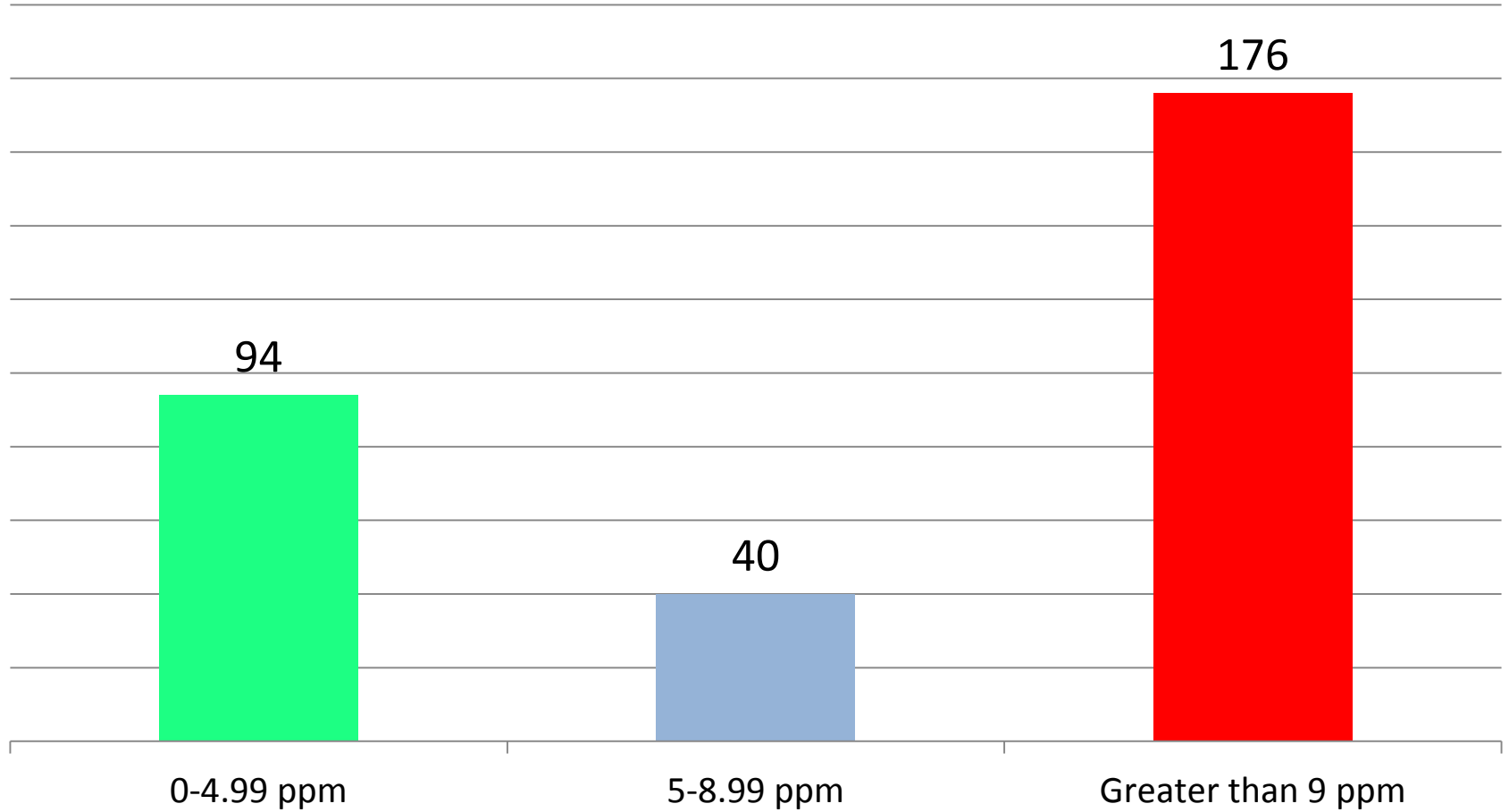


# 2017 LENRD Sampling

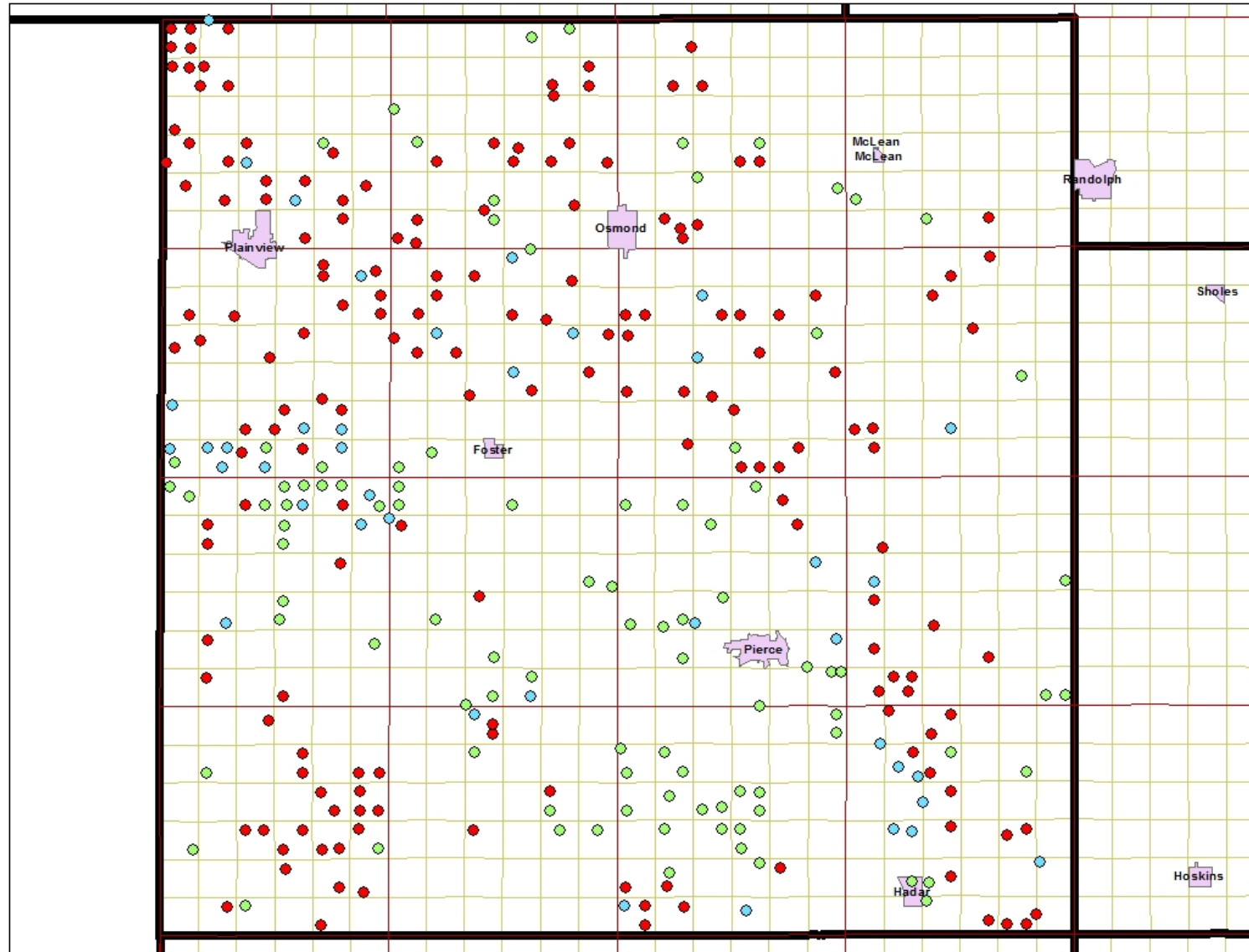
- 310 Samples collected in Pierce County
- Samples collected from June 20, 2017 until August 3, 2017
- Results ranged from non-detect to over 44 ppm
- Thanks to our summer interns: Austyn Houser, Kelsey Lee, and Stephanie Sorensen

# 2017 LENRD Sampling

Results by Phase Area Ranges

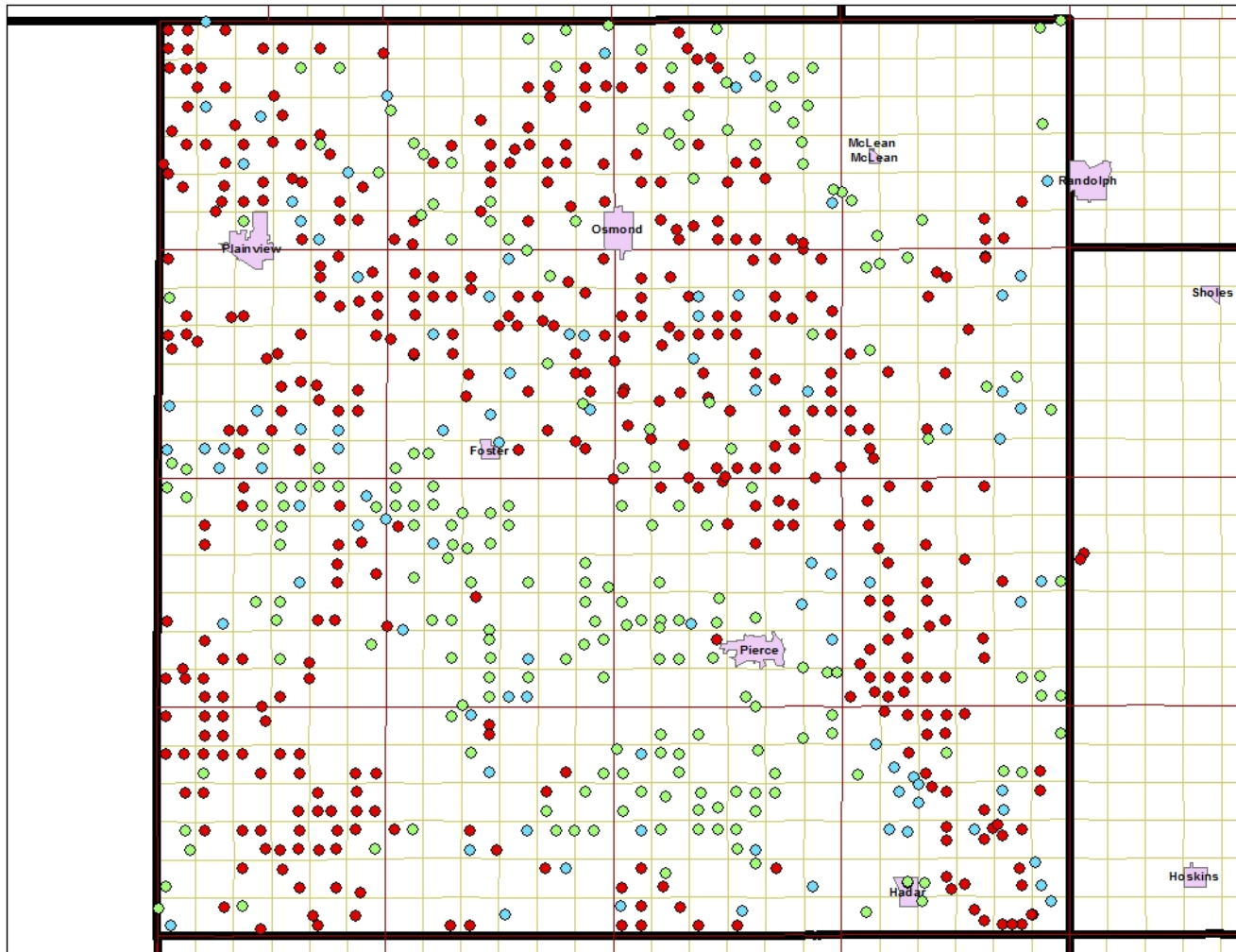


# 2017 LENRD Sampling



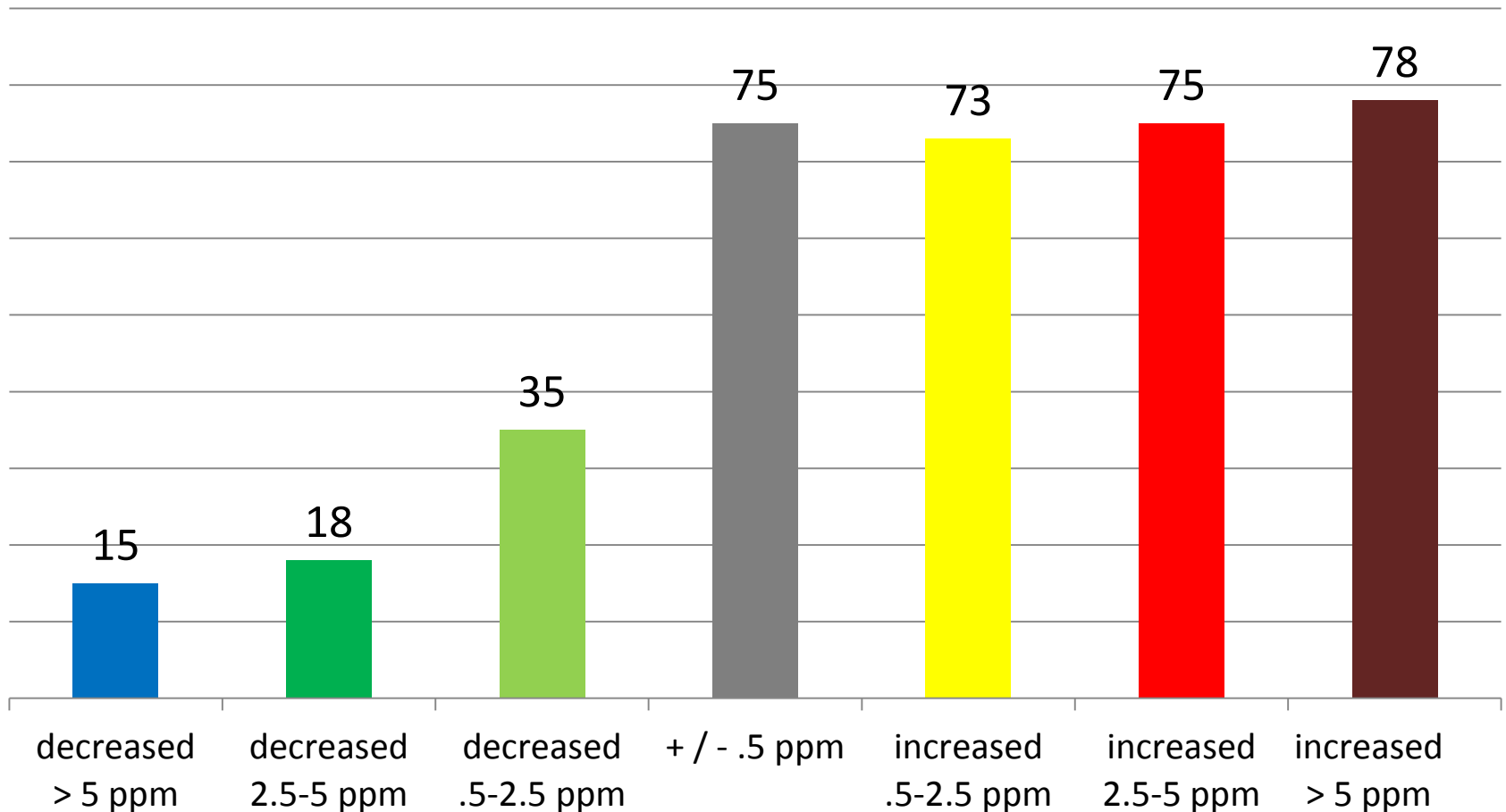
# 2017 LENRD Sampling

(2015-2017 Samples)



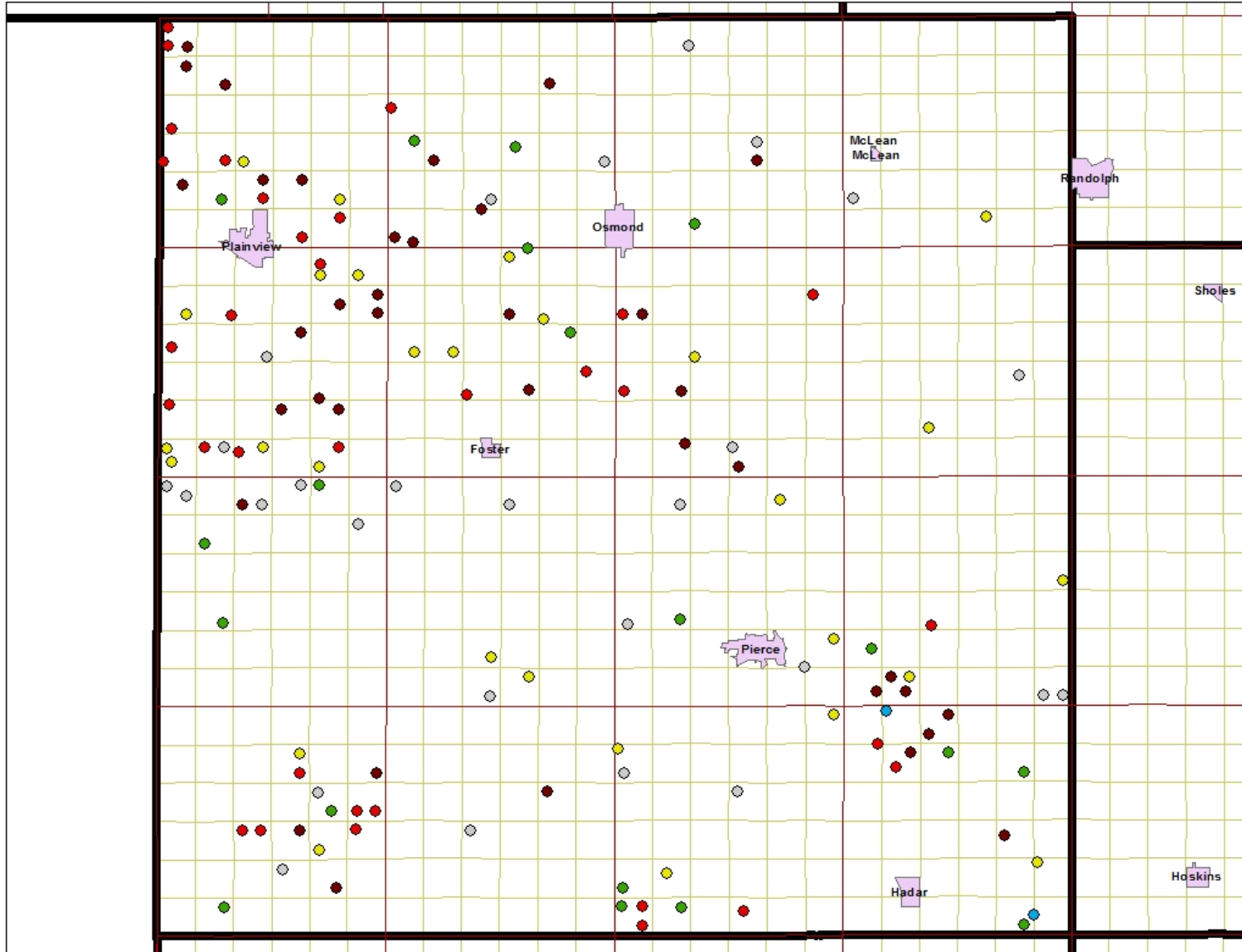
# 2017 LENRD Sampling

369 wells sampled in 2015 & 2017 had historical samples from 2002-2004



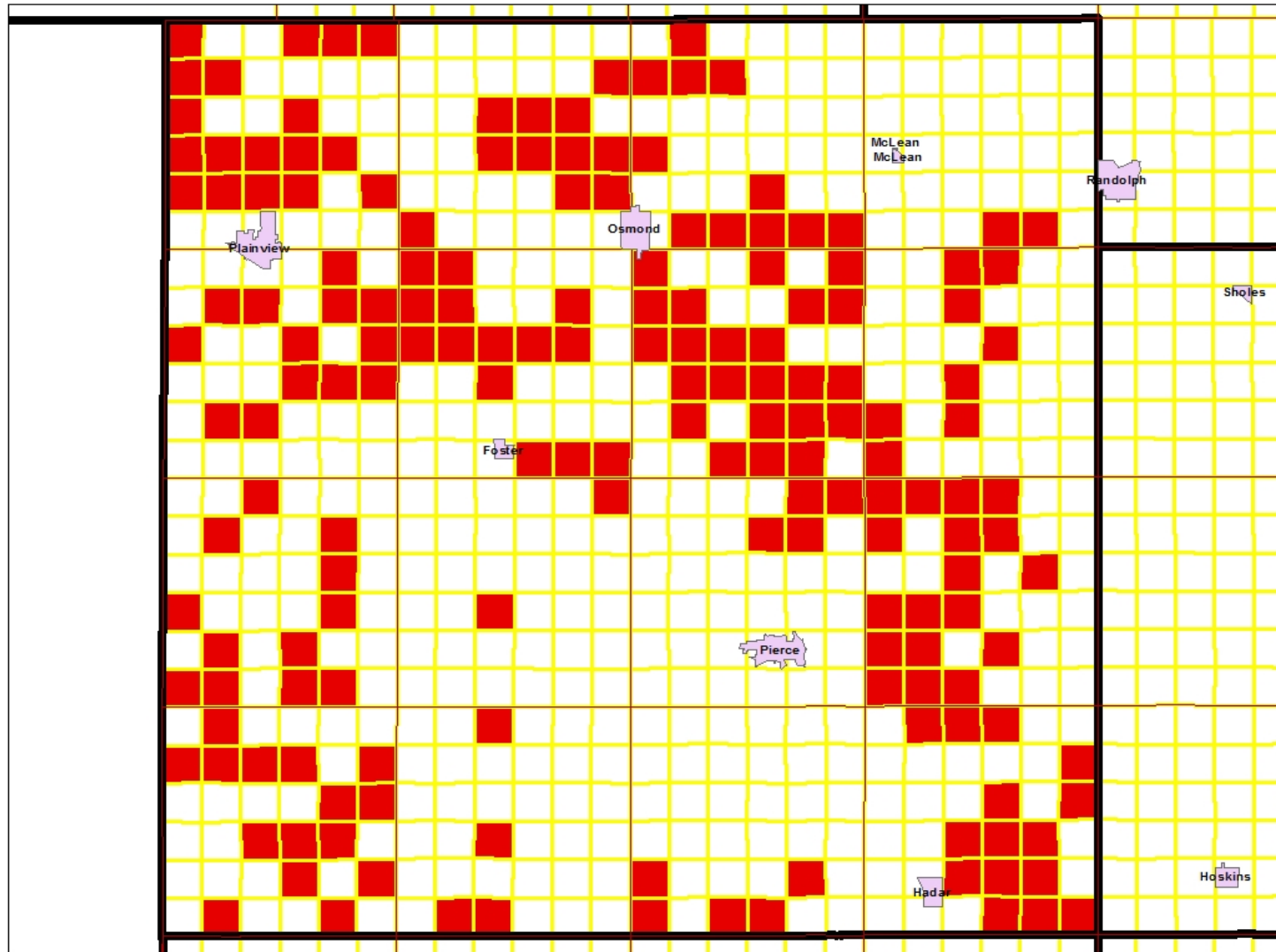
# 2017 LENRD Sampling

Changes from 2002-2004 sampling VS 2015/2017 sampling



# 2017 LENRD Sampling

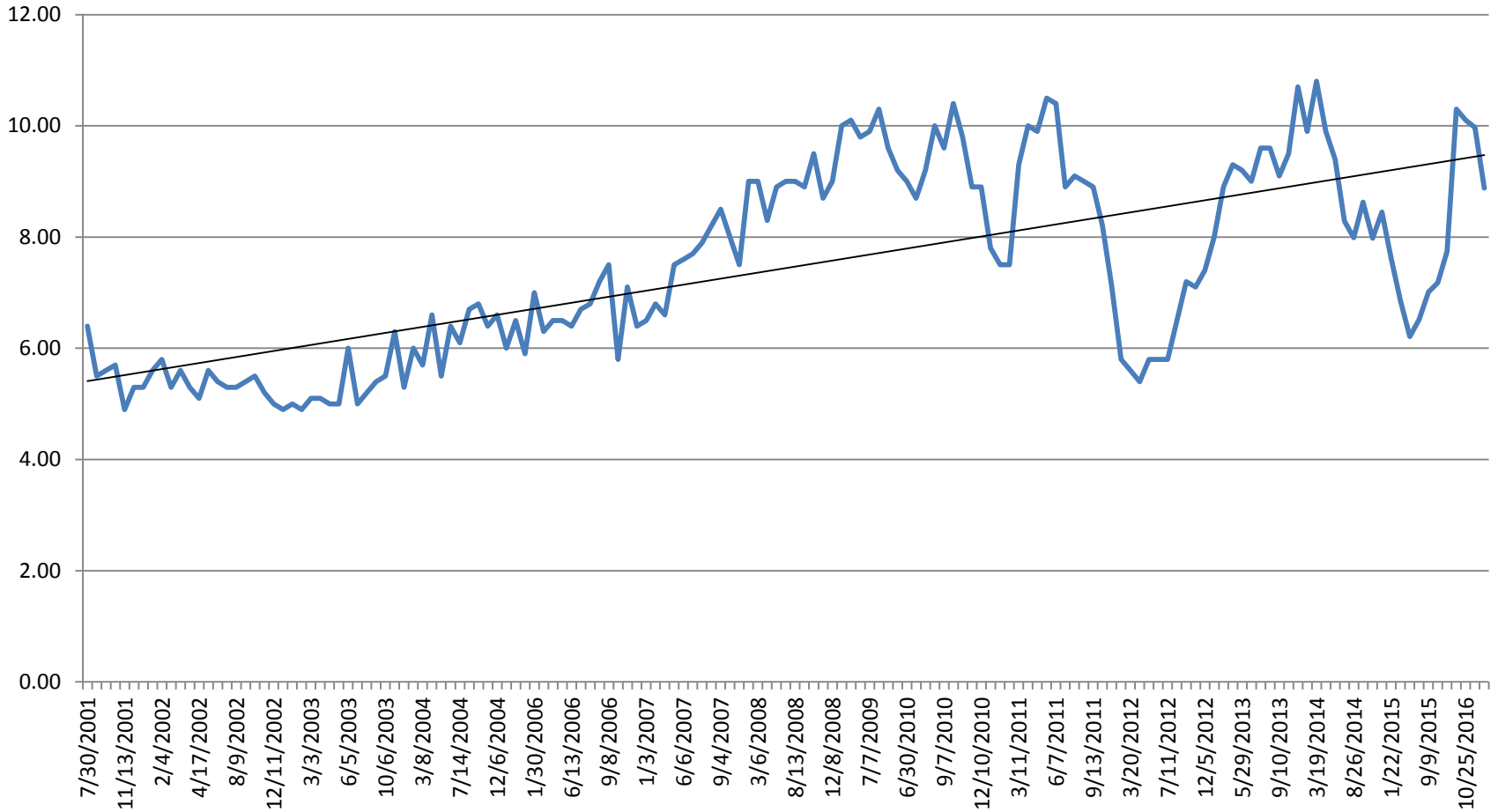
Sections with >50% of irrigation wells over 9ppm shaded in red – 2015/2017 sampling





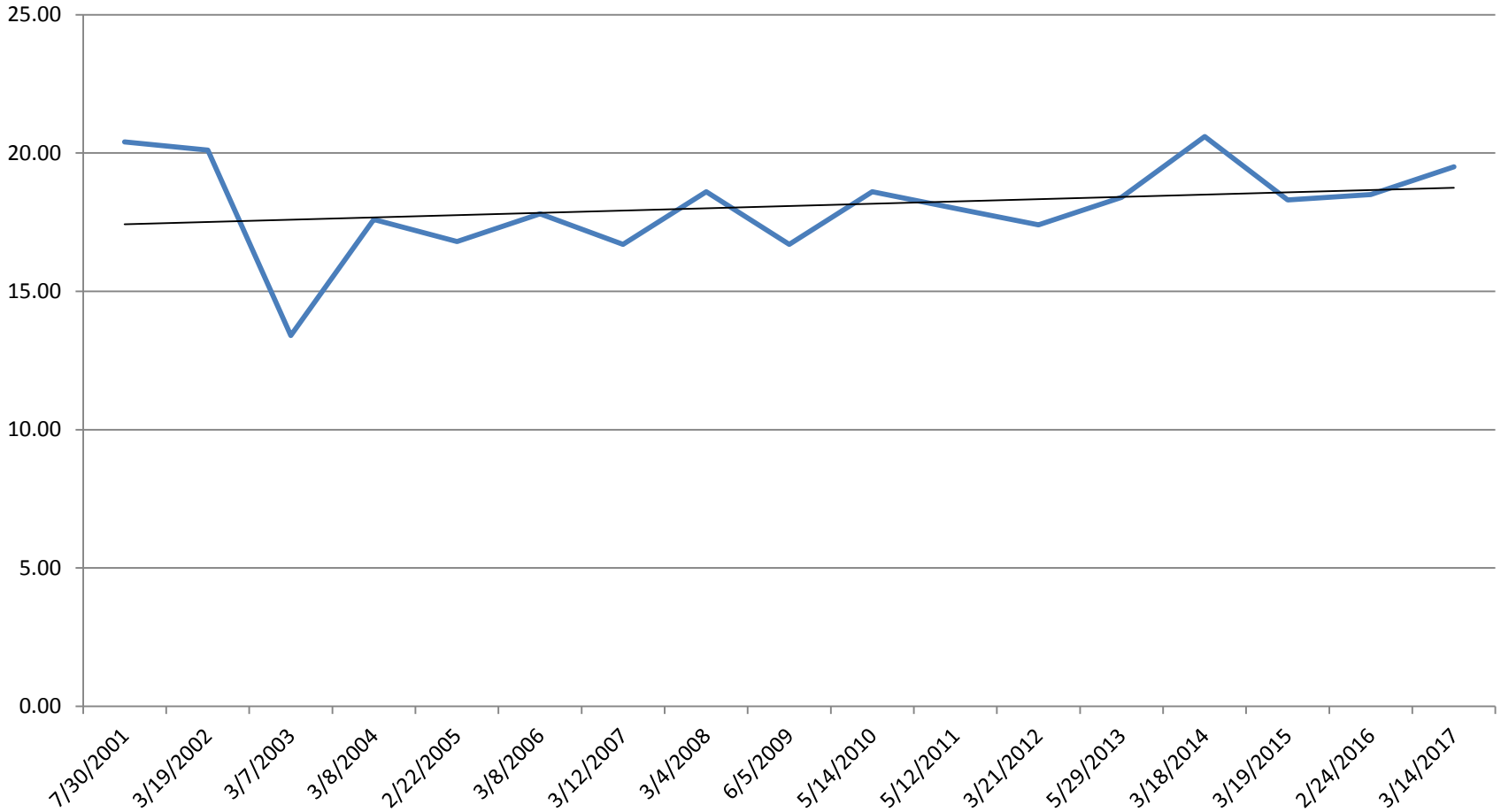
# Monitoring Well Nitrate Levels

MW 1M: 3 miles east of Pierce



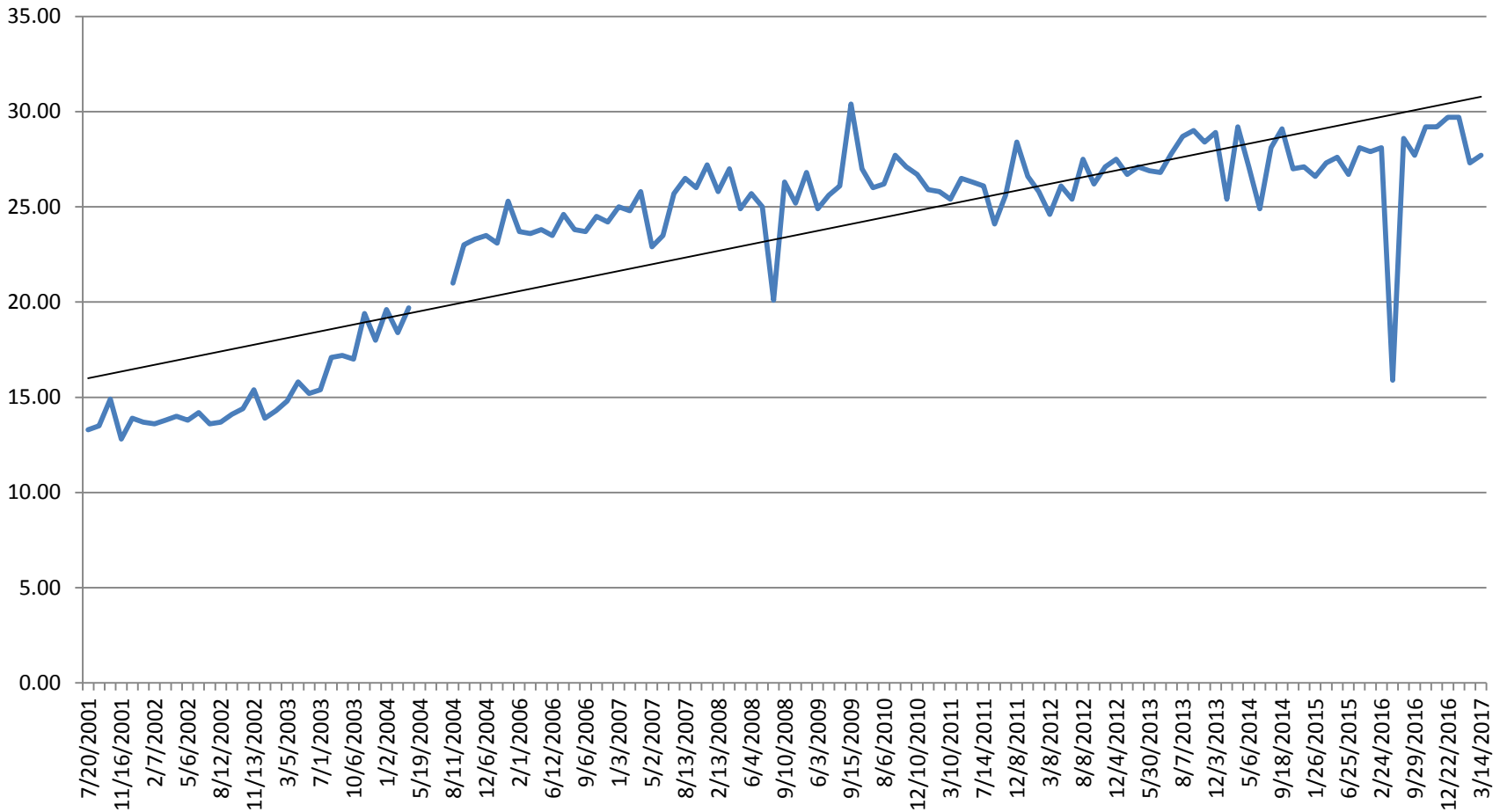
# Monitoring Well Nitrate Levels

MW 2M: 3 South, 2 West of McClean



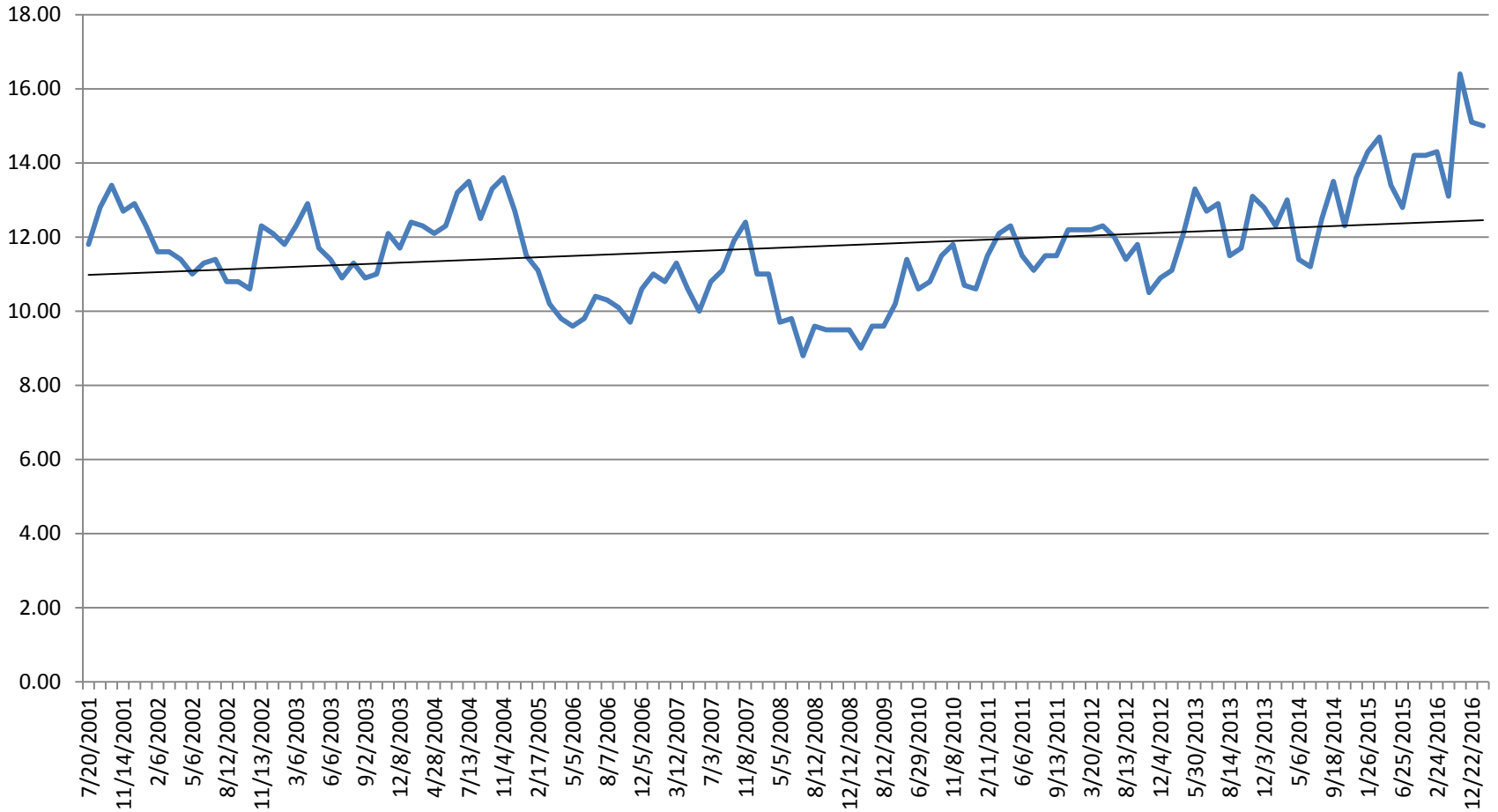
# Monitoring Well Nitrate Levels

MW 6S: 10 West, 1 South of Pierce



# Monitoring Well Nitrate Levels

MW 7S: 2 east, 2 south of Plainview



# Monitoring Well Nitrate Levels

MW 9M: 4 East, 8 north of Pierce

