



Spring 2017 Static Water Level
Measurements

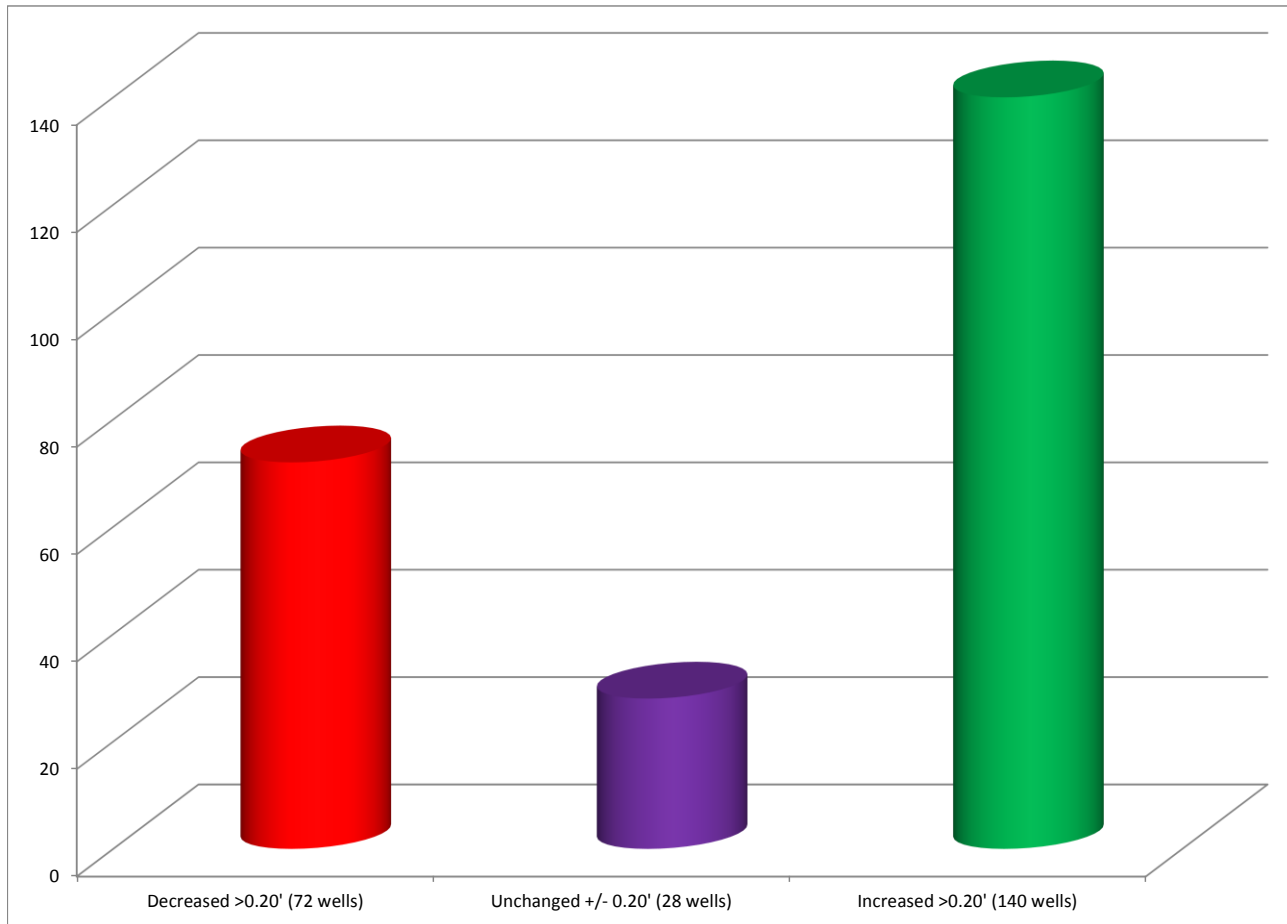
LENRD Spring Static Water Level Measurements

- Measurements started on March 20
- 240 irrigation wells measured throughout the district
- Josh Schnitzler, Mason Bushnell, and Dallas Dorey conducted measurements



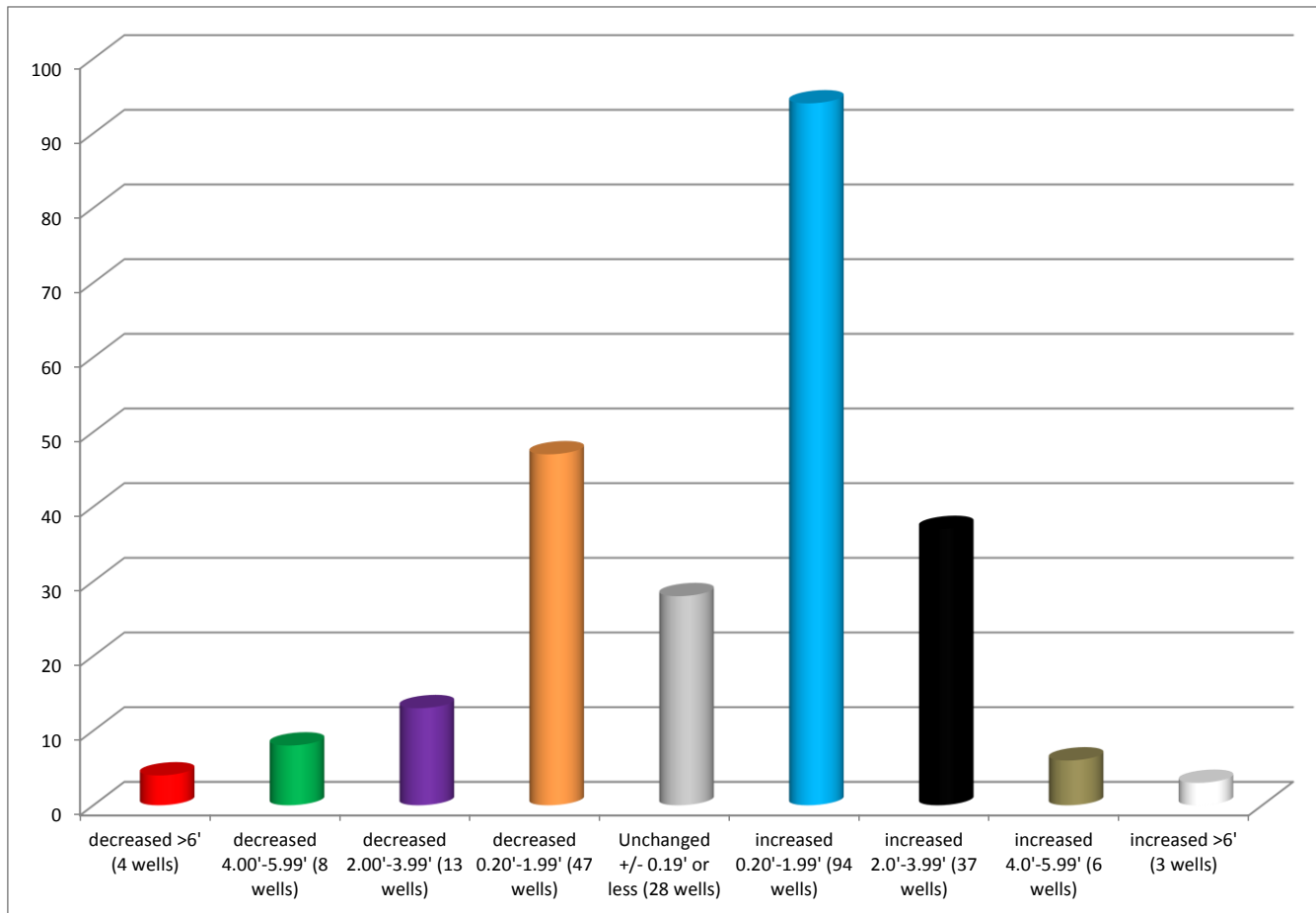
LENRD Spring Static Water Level Measurements

*Measurements compared to Spring 2016 levels



LENRD Spring Static Water Level Measurements

*Measurements compared to Spring 2016 levels



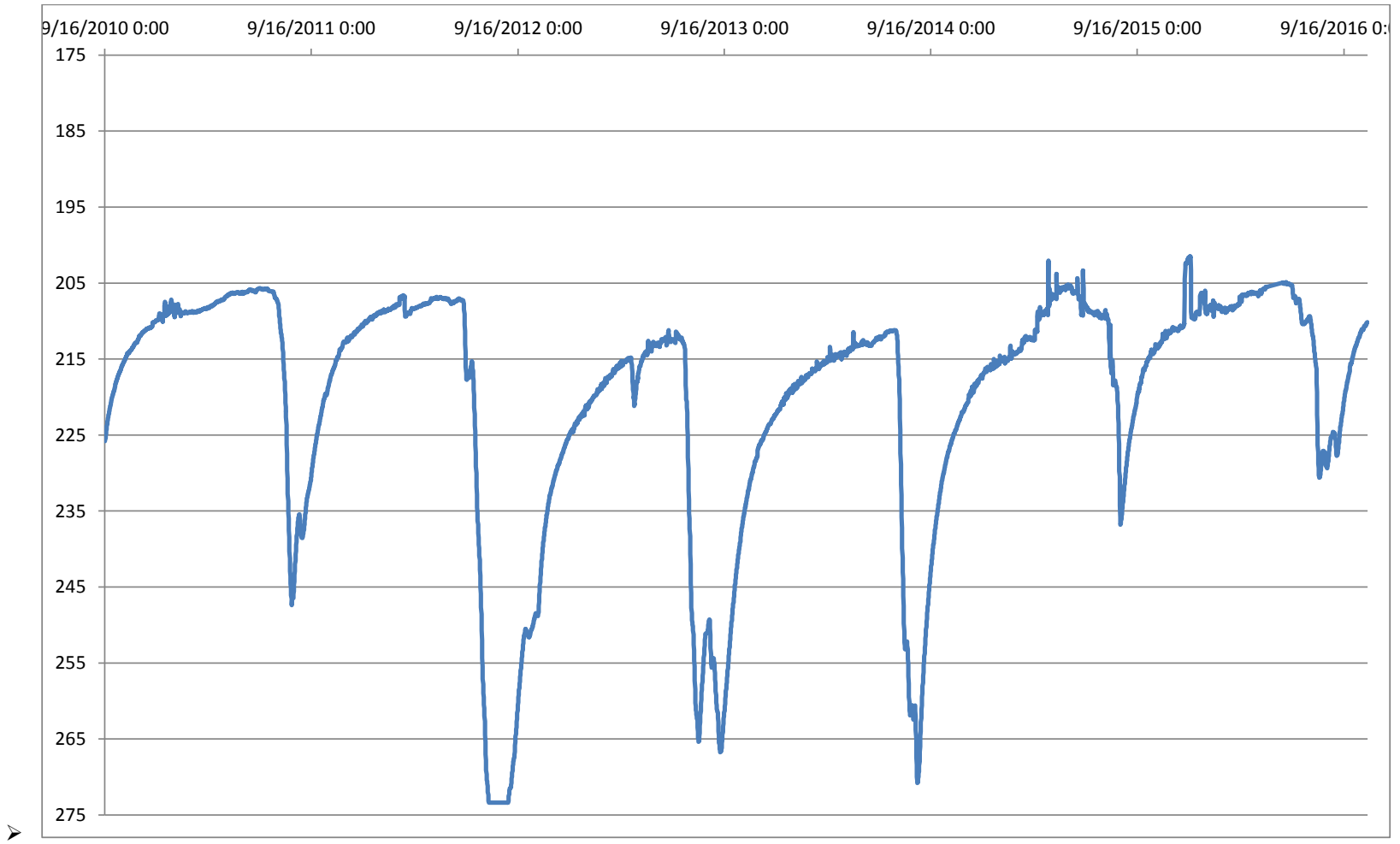
LENRD Spring Static Water Level Measurements

- Please be reminded these measurements are indicative of levels when irrigation is not occurring
- Wells have had 6 months to recover from summer draw downs



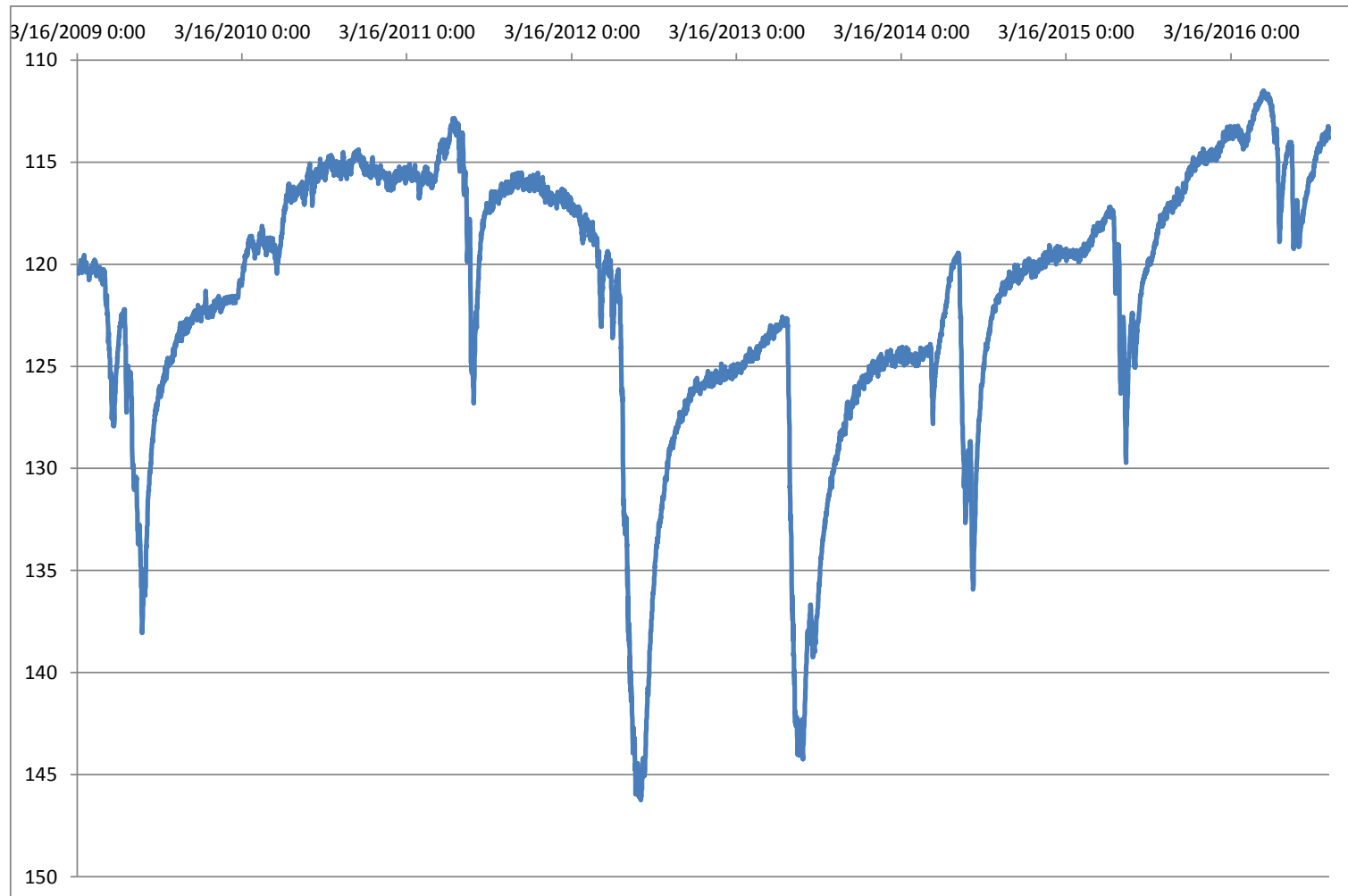
LENRD Spring Static Water Level Measurements

Monitoring well 35D – 7 South & 1 East of Howells; Colfax County



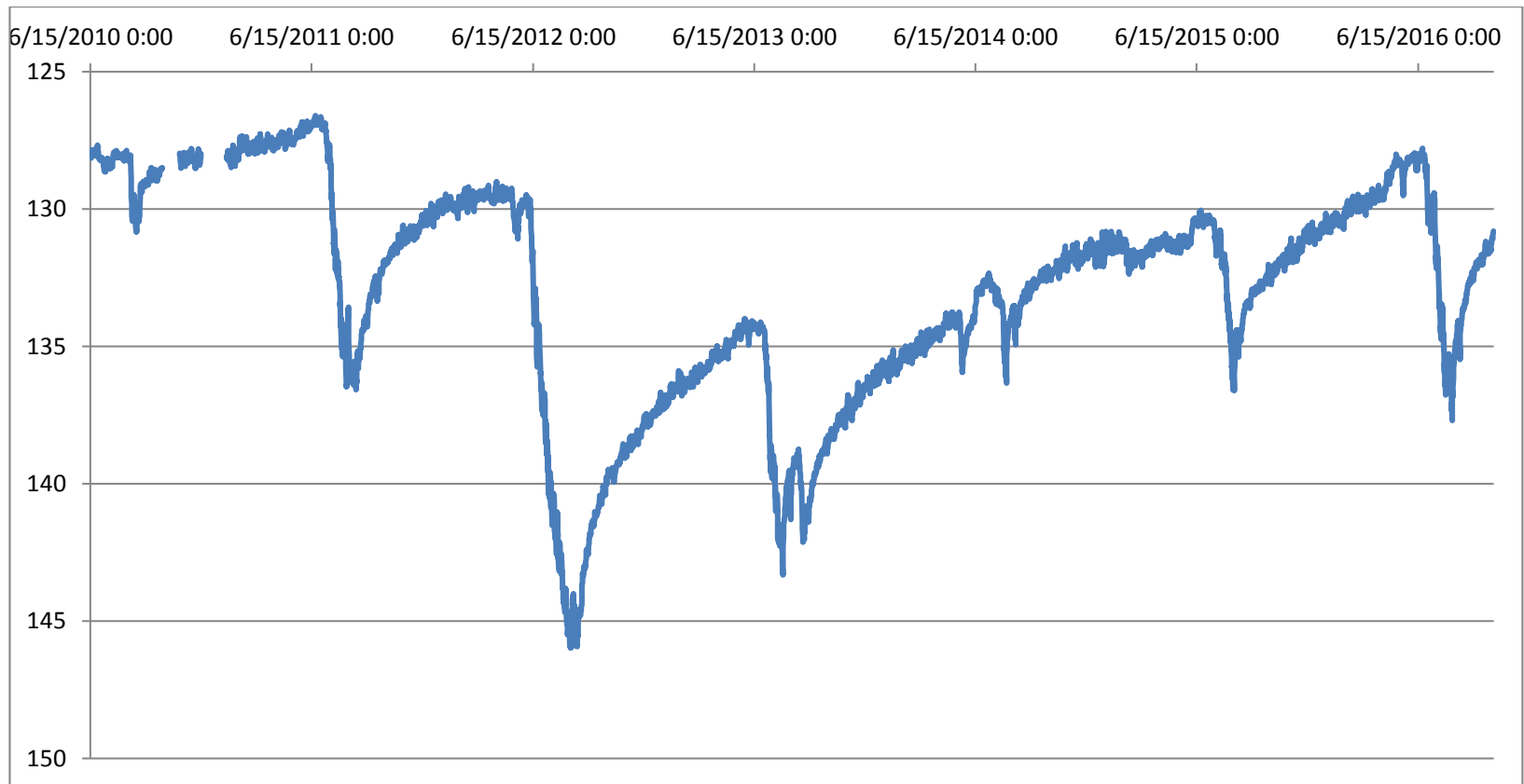
LENRD Spring Static Water Level Measurements

Monitoring well 30 – 5 West & 1 North of Oakland; Colfax/Burt County Line



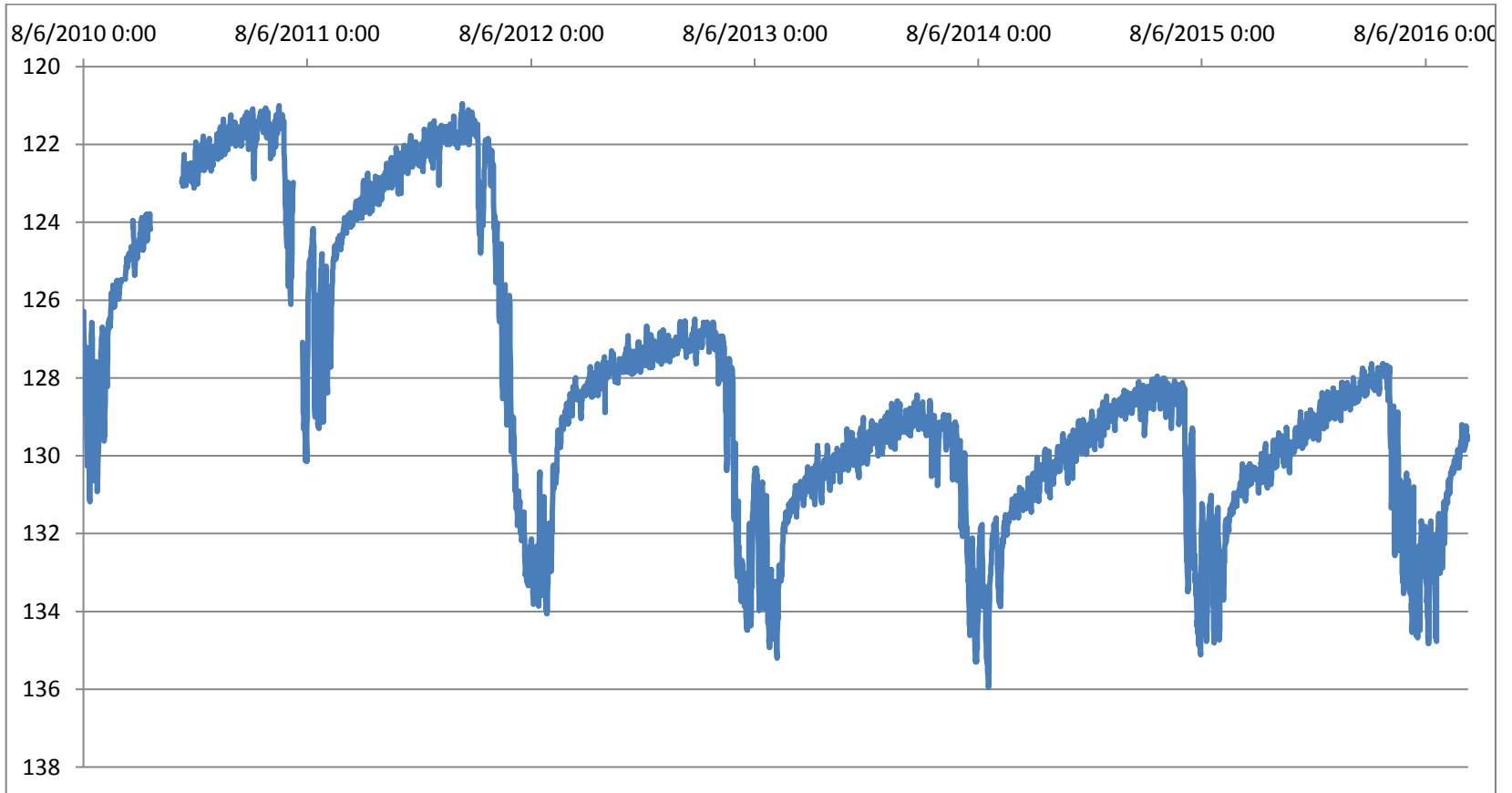
LENRD Spring Static Water Level Measurements

Monitoring well 23M – 2 North of Carroll; Wayne County



LENRD Spring Static Water Level Measurements

Monitoring well 5 – 7 North & 2 West of Meadow Grove; Madison County

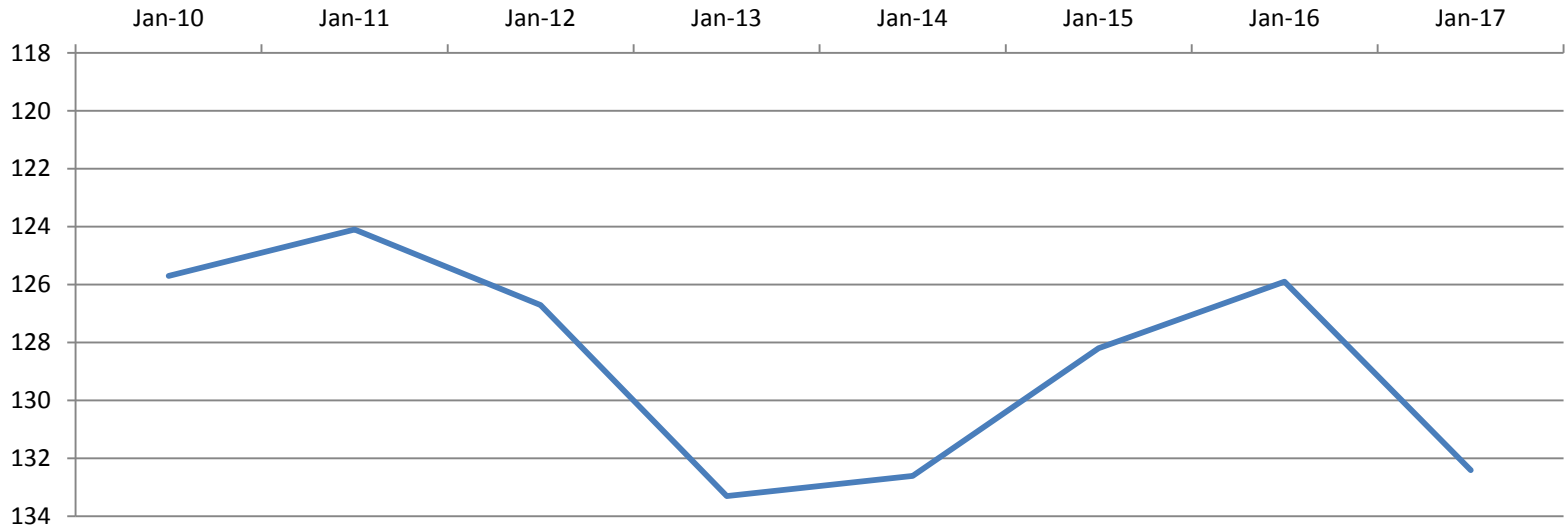


LENRD Spring Static Water Level Measurements

OTHER ITEMS OF INTEREST

- Wayne, Cedar, Dixon, & Thurston Counties: 2/3 of the 45 wells measured had lower water levels than Spring 2016.

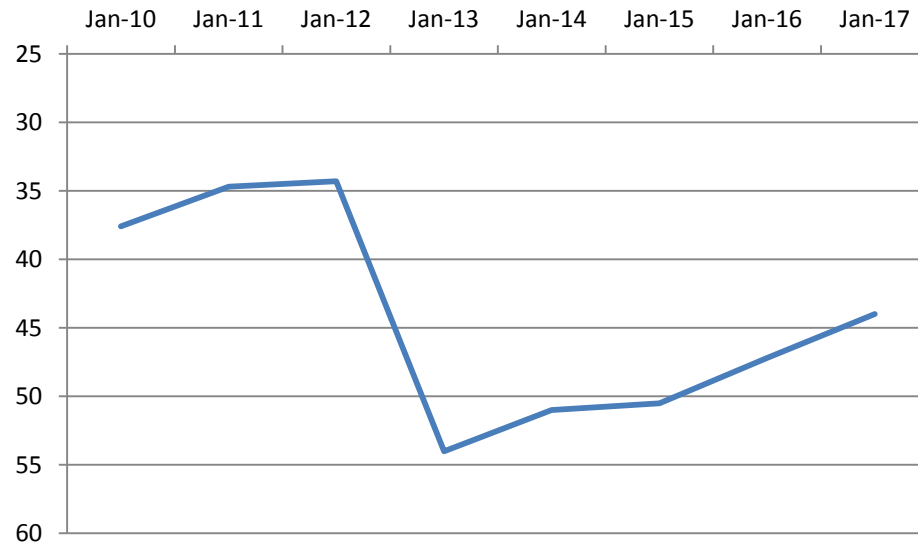
*Well located 1 mile south of Carroll, NE – Historic low is 134.1' in 1982, this year measured 132.4'.
Only 1.7' off historic low*



LENRD Spring Static Water Level Measurements

- Platte, Colfax, Dodge, and Cuming Counties: lowest % of wells with water level declines from Spring 2016. Also included 14 out of 71 wells that increased in water level >3'

Well located 10 miles south of Clarkson, NE – Historic low was in spring 2013 (54'). Well still has not recovered to pre-2013 historic low levels (41.9' in 2007)



LENRD Spring Static Water Level Measurements

-Quantity Subarea Info.-

- Measurements included 21 wells in LENRD quantity management subareas
- 7 decreased, 8 unchanged, 6 increased



LENRD Spring Static Water Level Measurements

QUESTIONS / COMMENTS? Contact the:

